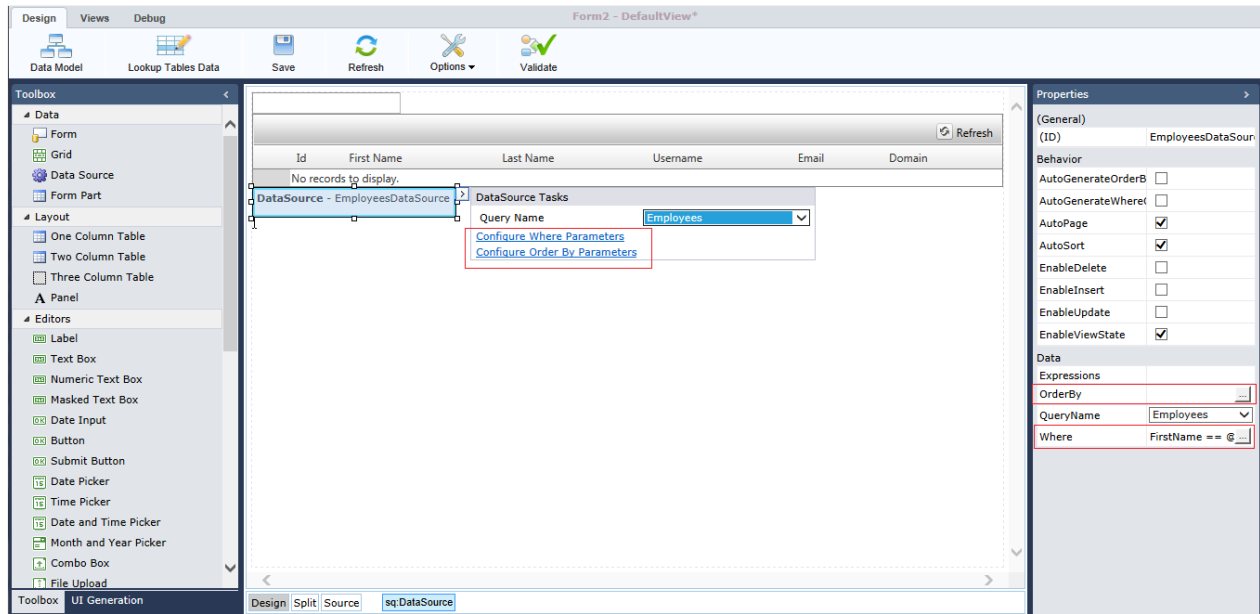


Configure Where Parameters for a Data Source

Last Modified on 01/16/2018 8:01 am EST

Filter a data source's displayed values according to a Where expression. For example, after you create a grid and a text box, you can configure the data source so that when the end user enters a last name in the text box, the grid displays only the records with that last name. You can also order the results according to specific columns.

Procedure to Define a Where Parameter for Tables and Lookup Tables



1. Open the data source's smartpane, and select **Configure Where Parameters**.
2. Define the Where expression parameters.

Parameter	Description
Column	The column of the grid by which you want to filter results.
Operator	There Where clause logical operator, for example, ==.
Source	The source of the value by which you want to filter the results. There are several options. For example: Control (the value of a control on the form), Expression (a Cora SeQuence expression), Cookie, Form, Profile, Query Session. For more information, see http://msdn.microsoft.com/en-us/library/xt50s8kz(v=vs.100).aspx .
Default Value	Default value by which to filter the results.

3. Click **Add**.
4. (Optional) Click Advanced Mode to create a complex expression with multiple AND, OR conditions.

Where Parameters Wizard -- Webpage Dialog

http://10.10.10.5:9090/Administration/Web/UI/UXStudio/Views/AspMarkup/Wizards/DataSource/DataSourceWhereParametersWizard.aspx?wo

Where Parameters Wizard

Add one or more conditions to the Where expression. For each condition you can specify either literal value or a parameterized value. Parameterized values get their values at runtime based on their properties.

Column: Operator: Source:

ControlID:

Default Value:

Expression: Value:

Preview:

Expression	Value
Name == @Name	TextBox1.Text

[Advanced Mode](#)

Procedure to Define a Where Parameter for Stored Procedures and Services

For Stored Procedure and Service Data Sources, there is no where expression, only the IN parameters passed to the SP or Service.

- Click **Add Parameter** to add them to the filter, and define their filter values in the **Source** field.

