

Define the Recipients Picker Lists

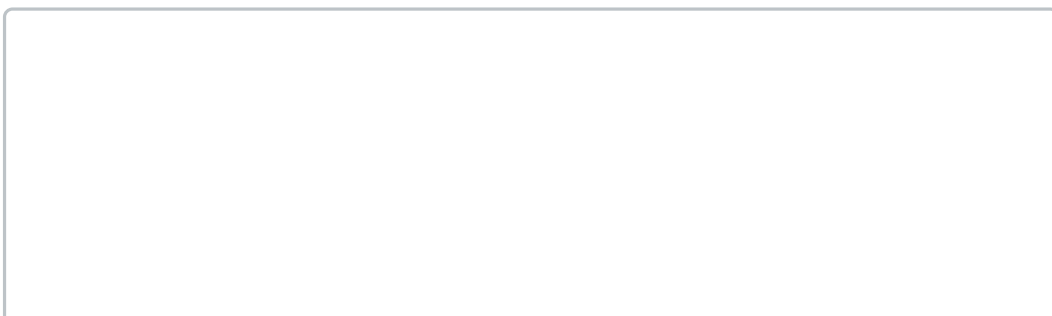
Last Modified on 12/03/2017 7:36 am EST

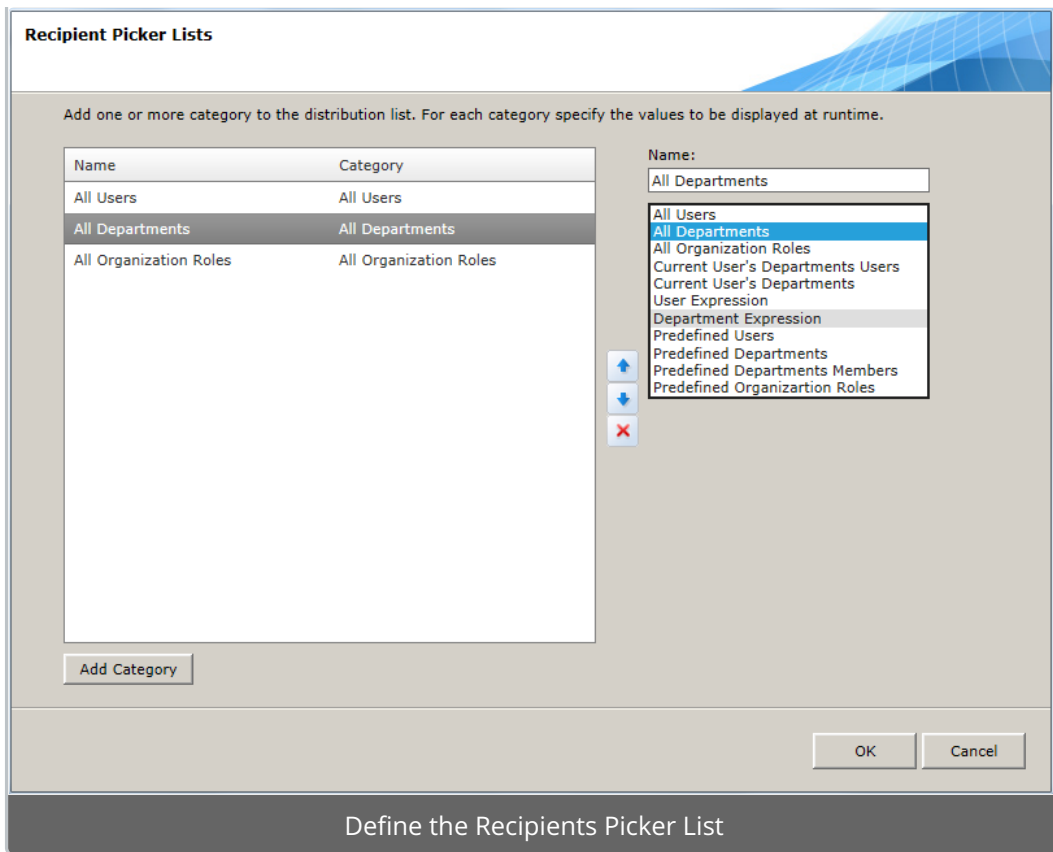
Overview

In Flowtime, end users can reassign messages to other users, by selecting such users from a Recipients Picker. You can customize the recipients that display to end users in the Recipients Picker. Users and categories you remove do not appear in the Flowtime list.

Category Types

Category	Description
All Users	All users in the organization, which are defined in the Cora SeQUENCE repository.
All Departments	All departments in the organization, which are defined in the Cora SeQUENCE repository.
All Organization Roles	All roles in the organization, which are defined in the Cora SeQUENCE repository.
Current user's departments user	The users that are in the same departments as the current user.
Current user's departments	The departments that the current user belongs to.
User Expression	A Cora SeQUENCE expression that evaluates to a <i>user id</i> or <i>IEnumerable</i> of <i>user id</i> .
Department Expression	A Cora SeQUENCE expression that evaluates to a <i>department id</i> or <i>IEnumerable</i> of <i>department id</i> .
Predefined Users	List of users.
Predefined Departments	List of departments.
Predefined Department Members	Users that belong to a list of departments.
Predefined Organization Roles	List of roles.





Recipient Picker in Flowtime

