

# IMAGE MAP Cora SeSequence V9.0 modular architecture

Last Modified on 08/07/2019 5:11 am EDT

## V9.0

### Overview

Cora SeSequence V9.0 architecture has been restructured into several independent modules. Every site and service can be installed and deployed separately. These modules are the building blocks of Cora SeSequence applications: Administration, Flowtime, Background Runtime Service (BRS), Job Execution Service (JES), and Active Directory Synchronization Service (ADSS). Cora SeSequence introduces the concept of immutable applications, which are built, tested, and deployed as one unit containing all the required components. Applications are built and packaged using MSBuild or Visual Studio. You create a deployment package that can be immediately deployed. You can add your own code to the project to create customized applications.

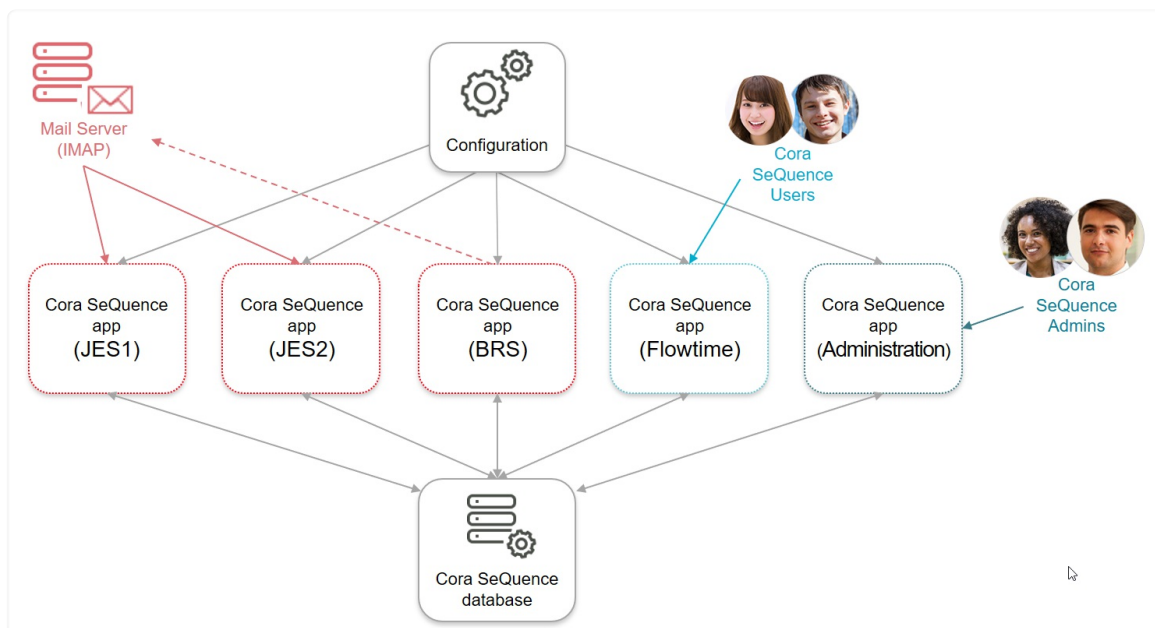
The new modular structure provides programming flexibility, and enables faster response and faster development.

### Benefits

- **Flexibility:** Faster and easier support of changes. Changes done in one area do not affect other areas of the system. For example, if you have made changes to Flowtime, you don't need to reinstall the entire Cora SeSequence environment. You can simply reinstall the Flowtime application. In addition, there are less update and upgrade issues, as each application is a standalone package.
- ,
- **Simplified deployment** (silent installation): The deployment process takes only a few minutes and can easily integrate with customer tools using PowerShell scripts.
- **Easier to scale out:** Adding new servers is faster, easier, and less risky. Easier to increase the server base to support larger volumes of data.

### Main components

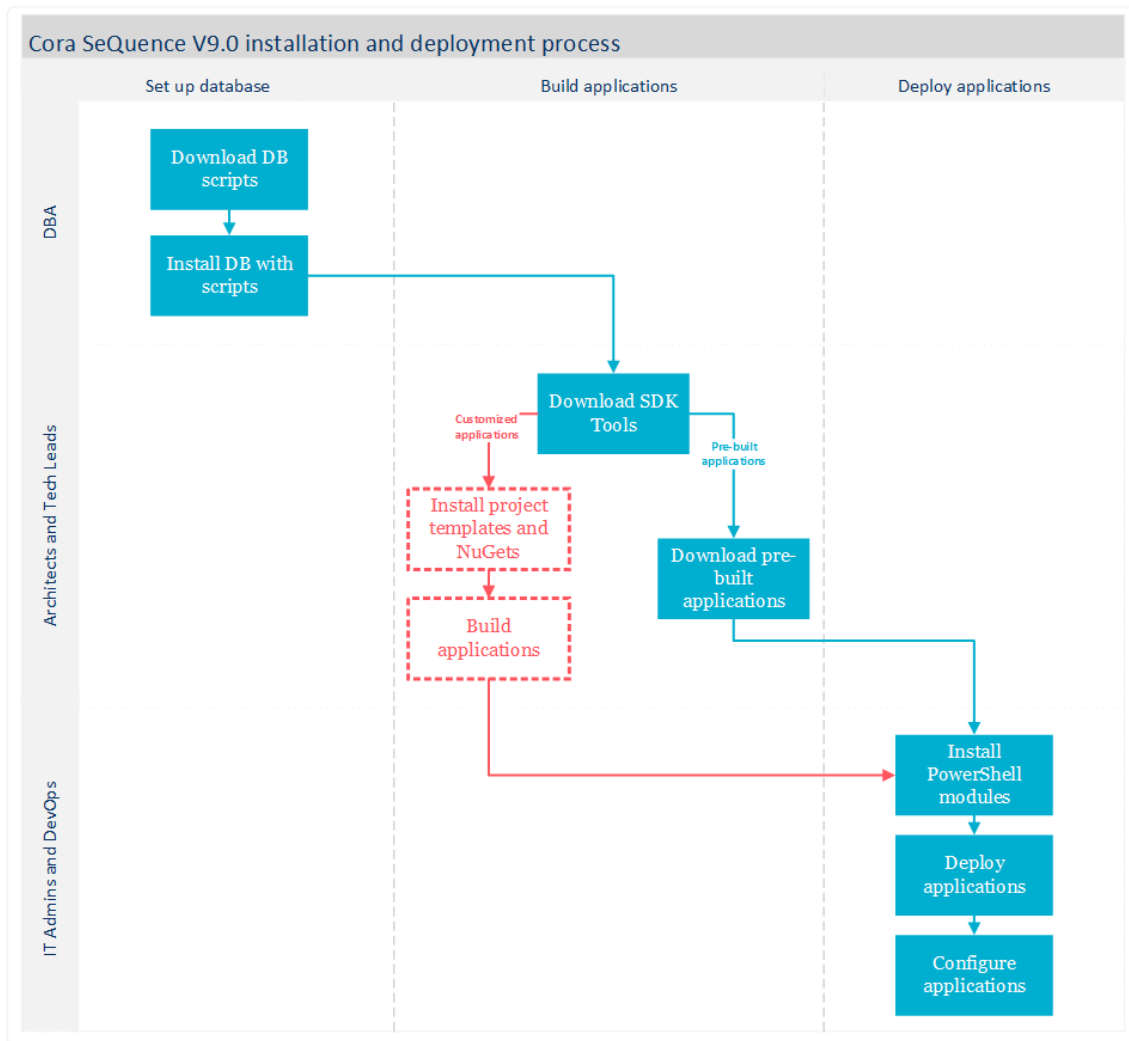
High-level view of the new modular structure.



## Deployment process

There are two deployment options:

- Simple deployment: Install pre-built applications. This path is relevant for systems that do not require any customization or special code.
- Customized applications: Build and deploy your own Cora SeSequence applications. This path is relevant for systems that require code customization, or use custom applications. It includes a different download package and two additional steps before you deploy the applications.

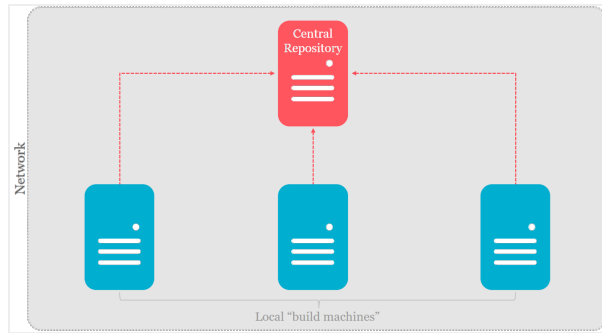


The deployment step is similar for both installation paths and is performed using PowerShell functions.

The custom installation process includes additional steps, such as setting up a "build machine" that includes Visual Studio and project templates and NuGet packages. This is the computer where you build the Cora SeSequence applications. The "build machine" also includes the required PowerShell modules.

### Best practice

It is recommended that the templates and NuGet packages be stored in a shared location, so that they are easily accessible for architects and tech leads who build applications.



You can build Cora SeSequence applications using Visual Studio Build Tools or VSTS Build Agent.

You can install and deploy Cora SeSequence using CI/CD automation tools, or by manually moving the files to the target computers and running the PowerShell scripts.


### Getting started


To get started with Cora SeSequence V9.0 installation and deployment procedures, see the following articles:


	Installation step	Article
1	Setting up the database	<a href="#">Installing DB Scripts for Cora SeSequence V9.0</a>
2	Building application	If you are deploying pre-built applications, see <a href="#">this article</a> . If you need to build customized applications, see <a href="#">this article</a> .
3	Deploying applications	<a href="#">Deploying applications</a>


Cora SeSequence V9.0 introduces several new terms. To become familiar with the new terminology, see [this article](#).

 **New Process**


 My Tasks 286

 Notifications 27

 Processes >

 Analytics

 Case Management >

 Task Management >